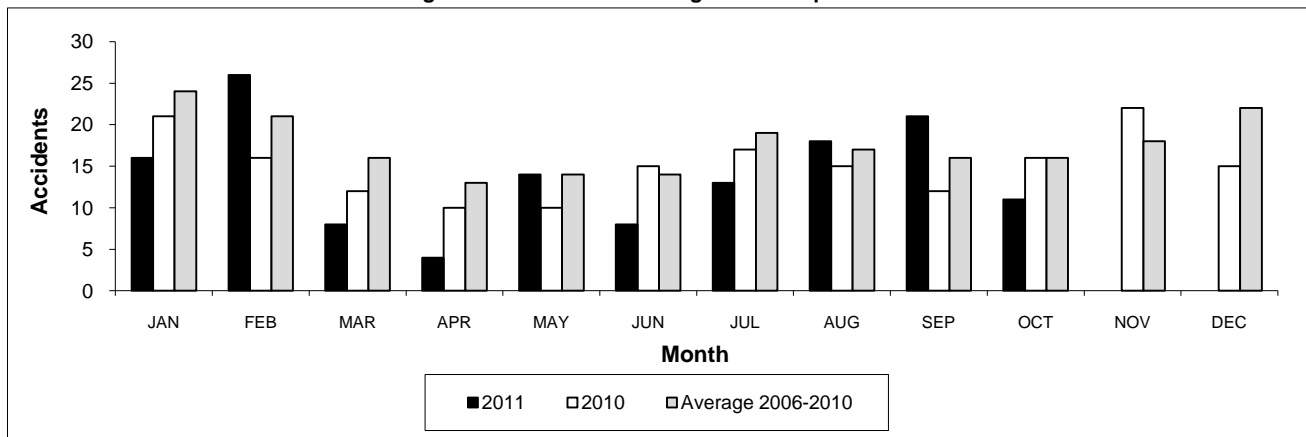


Table 2
Railway crossing and trespasser accidents by province

	Crossings with Type Recorded				All Crossings		Trespasser		
	2011 - Year To Date*				Year To Date*		Year To Date*		
	Public Automated	Public Passive	Private	Farm	2011	2010	2011	2010	
Newfoundland									
Accidents	2	0	0	0	2	0	0	0	
Fatalities	0	0	0	0	0	0	0	0	
Serious Injuries	0	0	0	0	0	0	0	0	
Nova Scotia									
Accidents	0	0	1	0	1	3	1	0	
Fatalities	0	0	0	0	0	1	0	0	
Serious Injuries	0	0	0	0	0	2	0	0	
New Brunswick									
Accidents	4	1	1	0	6	5	2	1	
Fatalities	2	0	0	0	2	1	1	0	
Serious Injuries	0	0	0	0	0	0	1	0	
Quebec									
Accidents	9	2	3	3	17	19	8	13	
Fatalities	2	0	0	1	3	1	6	10	
Serious Injuries	1	0	0	1	2	3	2	4	
Ontario									
Accidents	18	9	2	1	30	38	27	32	
Fatalities	4	2	1	0	7	4	21	25	
Serious Injuries	5	1	0	0	6	3	6	5	
Manitoba									
Accidents	3	2	0	0	5	13	1	3	
Fatalities	1	1	0	0	2	1	1	2	
Serious Injuries	1	0	0	0	1	2	0	1	
Saskatchewan									
Accidents	5	11	1	1	18	22	2	3	
Fatalities	0	0	0	1	1	5	1	2	
Serious Injuries	1	1	0	0	2	2	1	1	
Alberta									
Accidents	18	20	1	2	41	30	7	7	
Fatalities	3	2	0	0	5	5	2	4	
Serious Injuries	3	1	0	0	4	8	4	3	
British Columbia									
Accidents	12	4	2	1	19	14	11	14	
Fatalities	1	0	0	1	2	2	5	7	
Serious Injuries	3	0	1	0	4	1	6	4	
Northwest Territories									
Accidents	0	0	0	0	0	0	0	0	
Fatalities	0	0	0	0	0	0	0	0	
Serious Injuries	0	0	0	0	0	0	0	0	
Canada									
Accidents	71	49	11	8	139	144	59	73	
Fatalities	13	5	1	3	22	20	37	50	
Serious Injuries	14	3	1	1	19	21	20	18	

Figure 1: Number of crossing accidents per month



Data extracted November 15, 2011.

*Year to date is from January to October.

