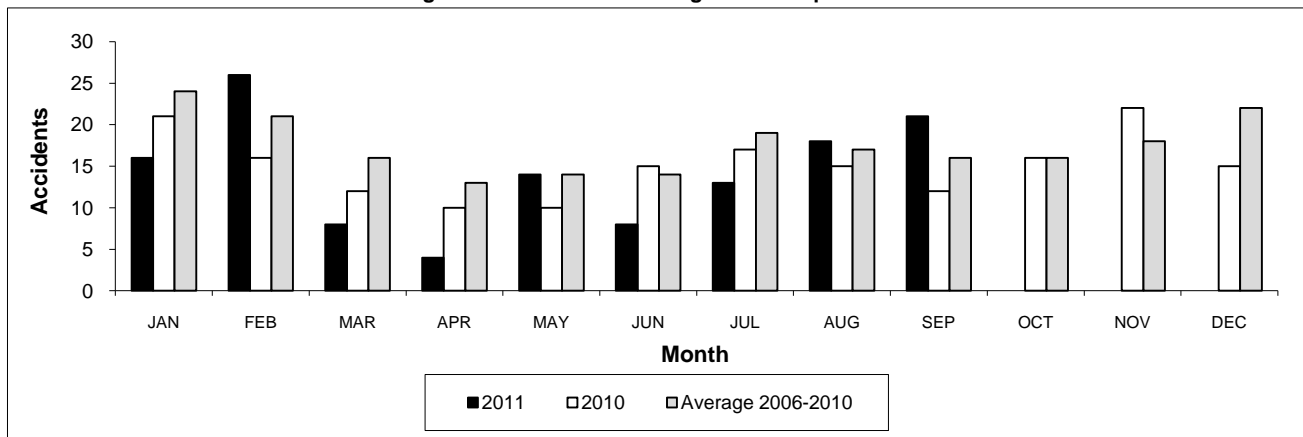


Table 2
Railway crossing and trespasser accidents by province

	Crossings with Type Recorded				All Crossings		Trespasser	
	2011 - Year To Date*				Year To Date*		Year To Date*	
	Public Automated	Public Passive	Private	Farm	2011	2010	2011	2010
Newfoundland								
Accidents	1	0	0	0	1	0	0	0
Fatalities	0	0	0	0	0	0	0	0
Serious Injuries	0	0	0	0	0	0	0	0
Nova Scotia								
Accidents	0	0	1	0	1	3	1	0
Fatalities	0	0	0	0	0	1	0	0
Serious Injuries	0	0	0	0	0	2	0	0
New Brunswick								
Accidents	4	1	1	0	6	5	2	1
Fatalities	2	0	0	0	2	1	1	0
Serious Injuries	0	0	0	0	0	0	1	0
Quebec								
Accidents	7	2	2	3	14	19	7	12
Fatalities	2	0	0	1	3	1	5	7
Serious Injuries	1	0	0	1	2	3	2	4
Ontario								
Accidents	17	8	2	1	28	32	23	27
Fatalities	4	2	1	0	7	1	17	22
Serious Injuries	4	1	0	0	5	1	6	3
Manitoba								
Accidents	3	2	0	0	5	11	1	2
Fatalities	1	1	0	0	2	0	1	2
Serious Injuries	1	0	0	0	1	2	0	0
Saskatchewan								
Accidents	5	10	1	1	17	20	2	2
Fatalities	0	0	0	1	1	5	1	1
Serious Injuries	1	1	0	0	2	1	1	1
Alberta								
Accidents	17	19	1	2	39	26	7	7
Fatalities	2	2	0	0	4	5	2	4
Serious Injuries	3	1	0	0	4	5	4	3
British Columbia								
Accidents	10	4	2	1	17	12	8	13
Fatalities	1	0	0	1	2	2	3	6
Serious Injuries	3	0	1	0	4	1	5	4
Northwest Territories								
Accidents	0	0	0	0	0	0	0	0
Fatalities	0	0	0	0	0	0	0	0
Serious Injuries	0	0	0	0	0	0	0	0
Canada								
Accidents	64	46	10	8	128	128	51	64
Fatalities	12	5	1	3	21	16	30	42
Serious Injuries	13	3	1	1	18	15	19	15

Figure 1: Number of crossing accidents per month



Data extracted October 18, 2011.

*Year to date is from January to September.